

# Rödl & Partner

## GLOBALLY ACTIVE



MAKE IN INDIA MITTELSTAND!

Rödl & Partner – Exclusive „Legal & Tax Partner Germany“

Rödl & Partner Consulting Pvt Ltd  
30 April, 2020

MIIM WEBINAR - INDIAN RENEWABLE ENERGY SECTOR OPPORTUNITIES  
Investing in Renewable Energies in India – Overview of the Legal Framework



# AGENDA

1 Market Entry Strategies

2 Tendering Process in India

3 Licenses & Permits

4 Way Forward

5 Contact



# 1 MARKET ENTRY STRATEGIES

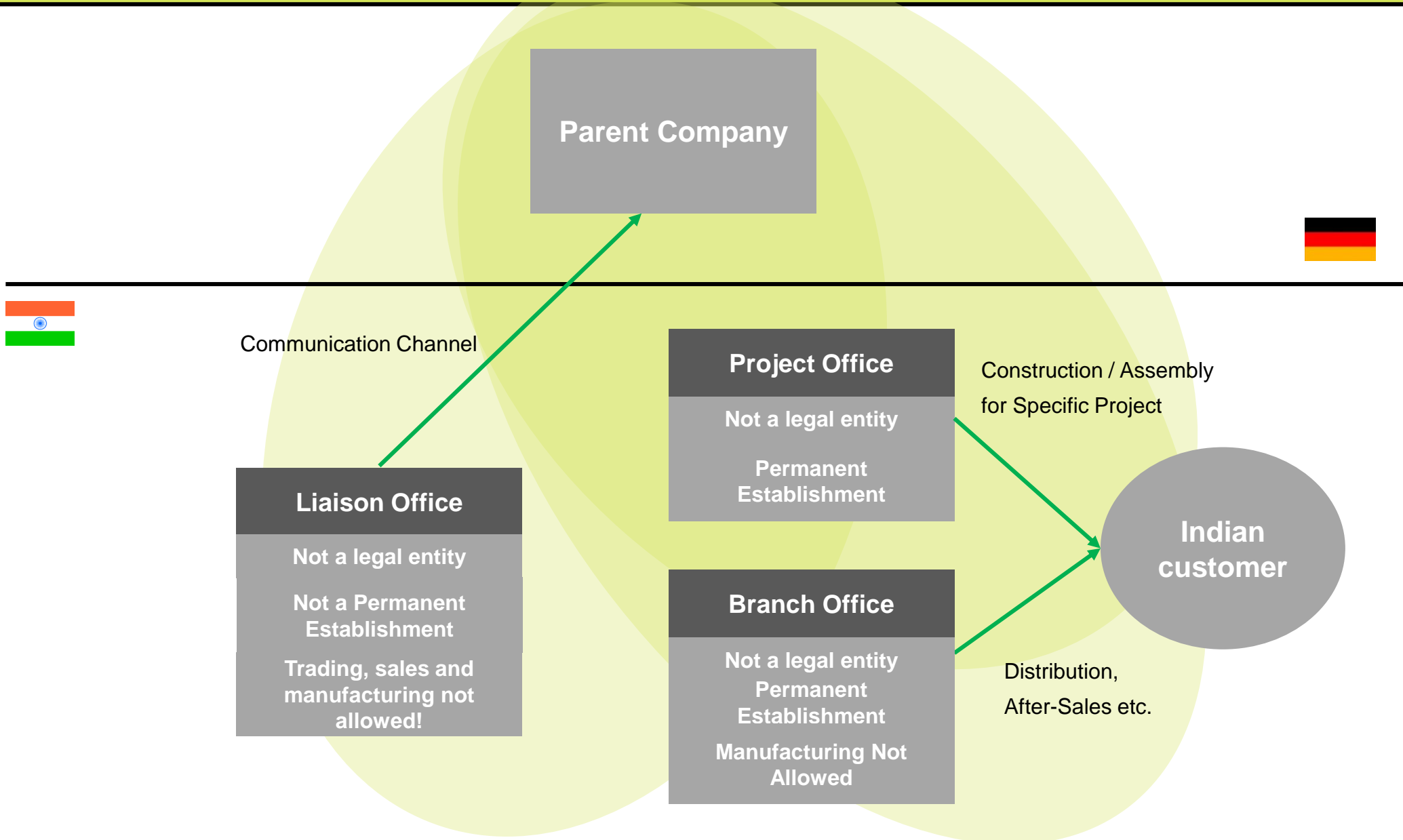
1.1 Project Office/Branch Office/Liaison Office

1.2 Private Limited Company

1.3 Joint Venture

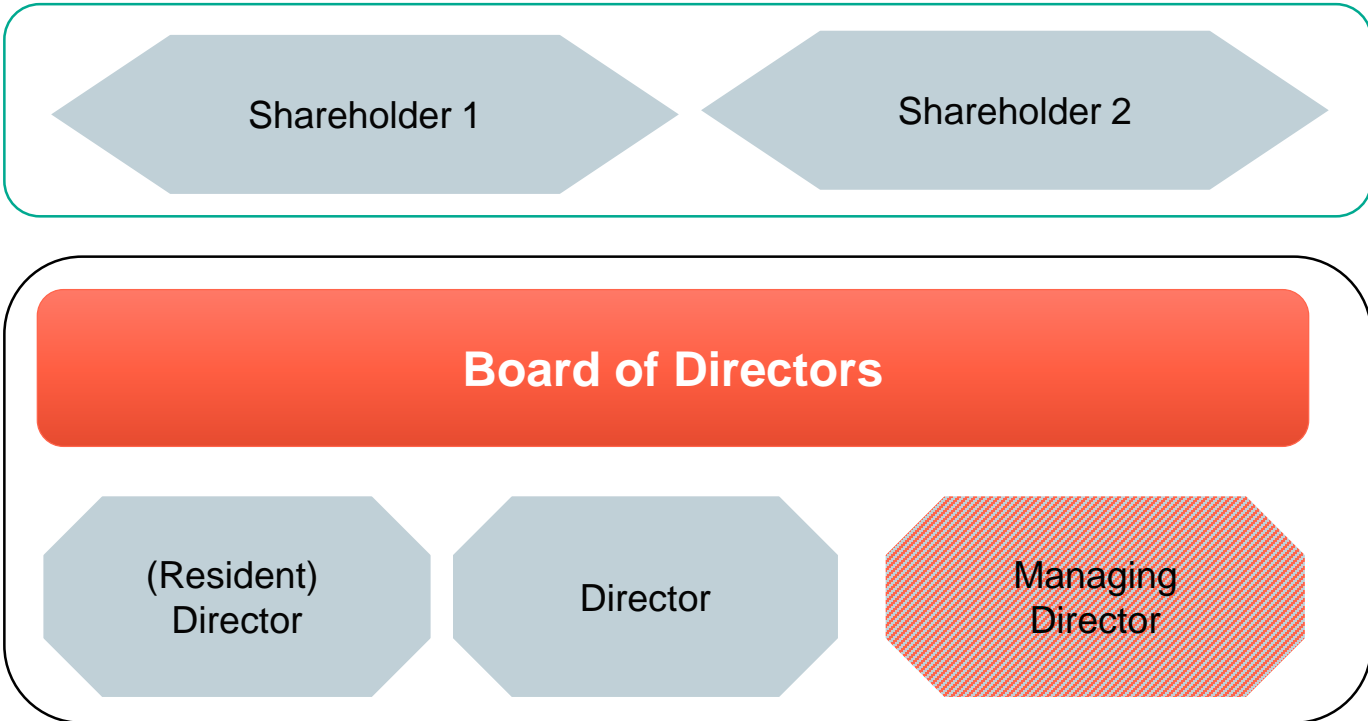


# 1.1 PROJECT OFFICE/ BRANCH OFFICE/ LIAISON OFFICE

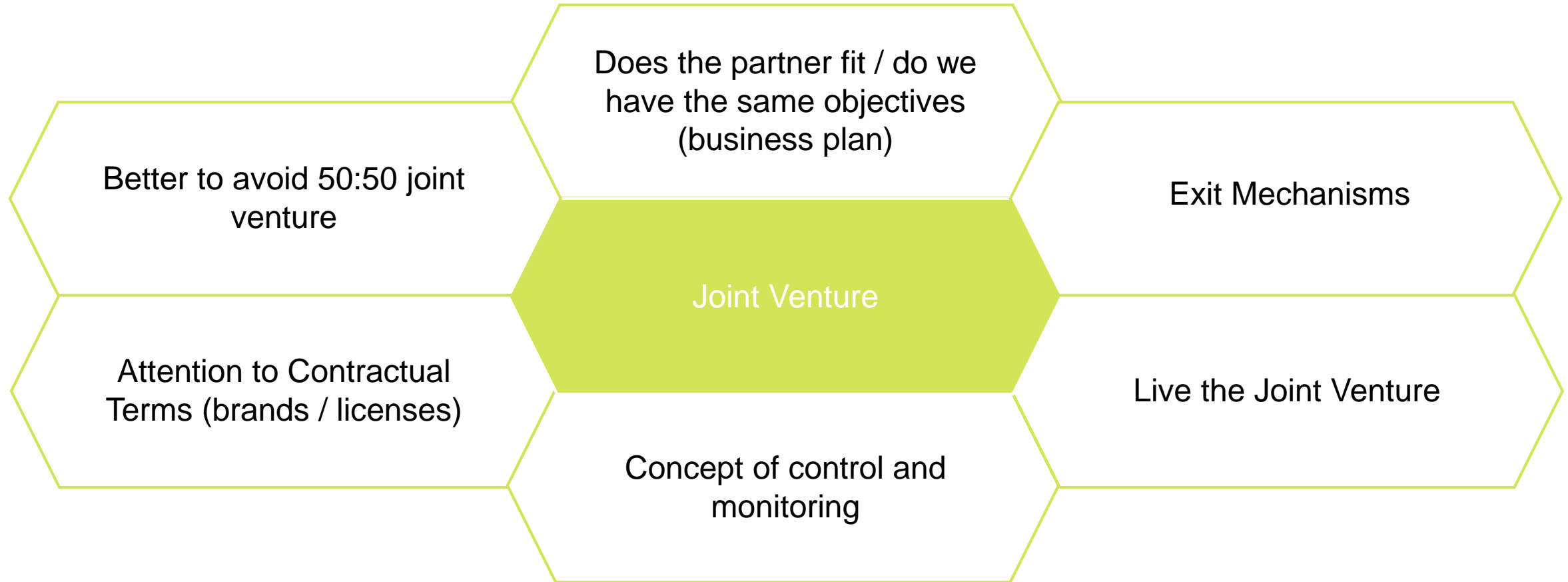


# 1.2 PRIVATE LIMITED COMPANY

## Structure



# 1.3 JOINT VENTURE



# 2 TENDERING PROCESS

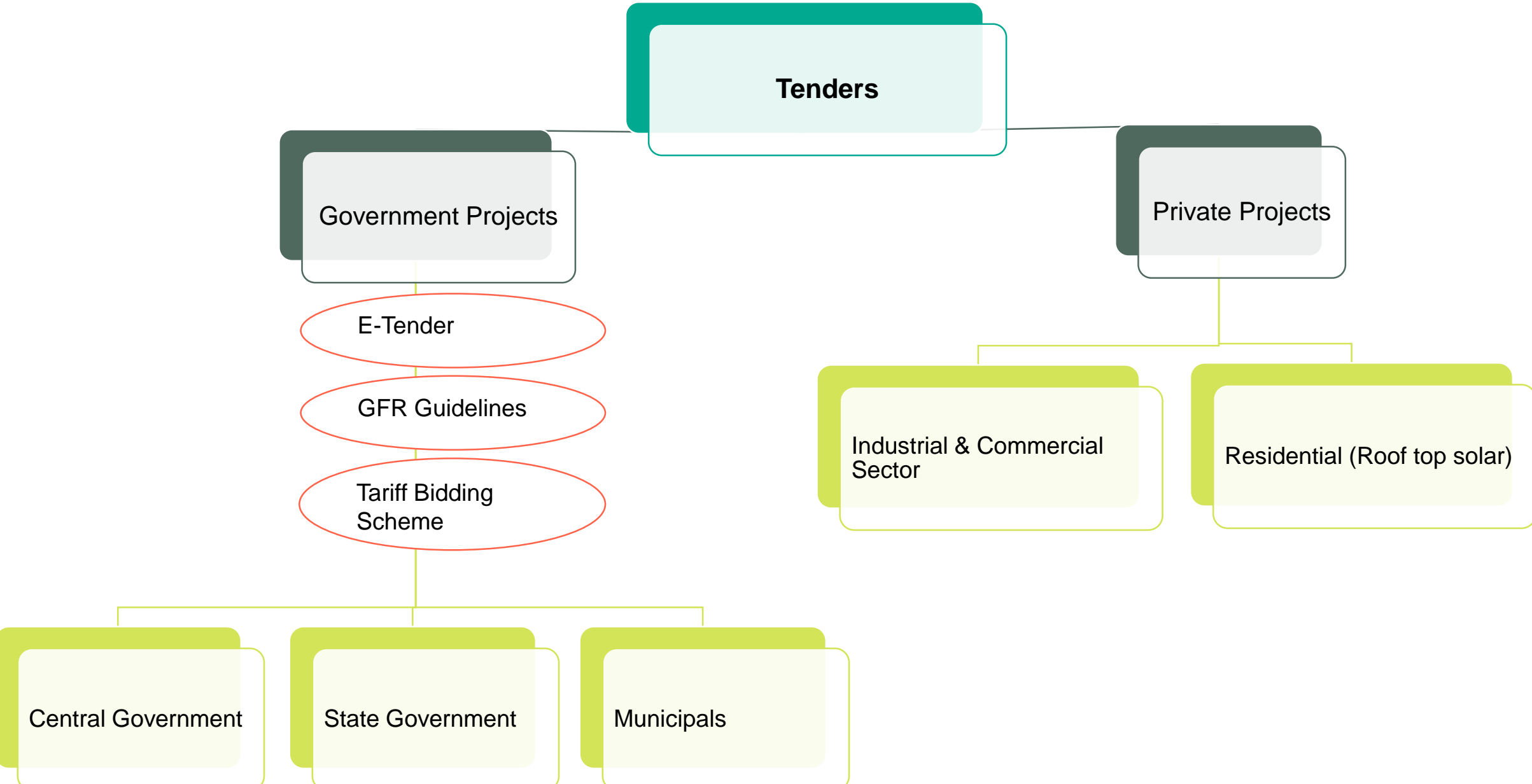
2.1 Market Opportunities

2.2 Contractual Relations

2.3 Winning Strategies

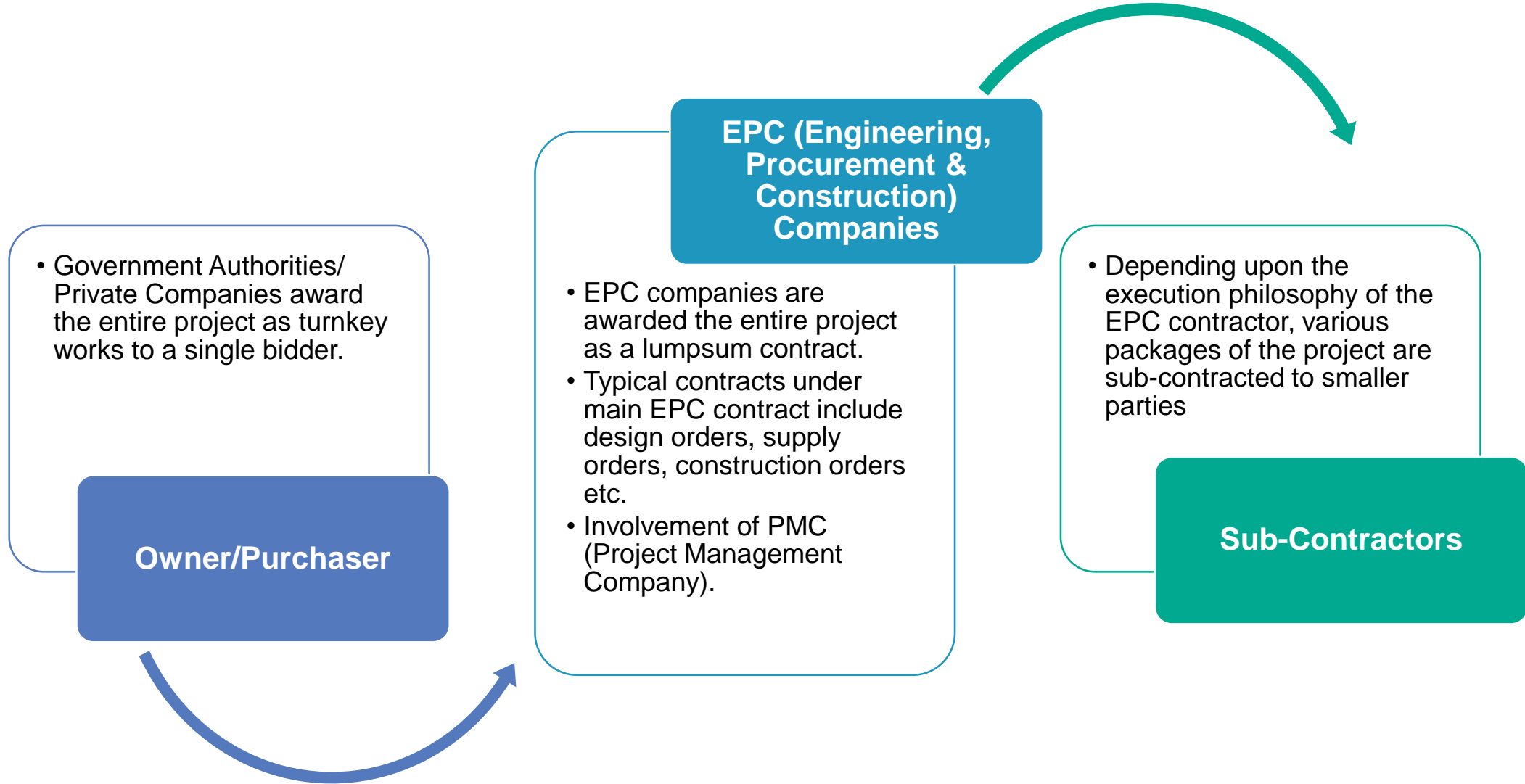


# 2.1 MARKET OPPORTUNITIES





## 2.2 CONTRACTUAL RELATIONS



## 2.3 WINNING STRATEGIES



# 3 LICENSES & PERMITS

3.1 Overview

3.2 One Stop Shop

3.3 Plug and Play Model



# 3.1 OVERVIEW

Several statutory and environmental clearances required



Such as

- Industrial Clearance
- Land conversion (Agricultural to Non-Agricultural)
- Environmental Clearance Certificate
- Contract labour license from Labour Department
- Fire Safety certificate from Fire Department
- Latest tax receipt
- Auditor compliance certificate regarding fossil fuel utilization
- Approval from Chief Electrical Inspector
- Clearance from Forest department
- Electricity Load MPCB

Environment (Protection) Act, 1986

Ministry of Environment, Forest and Climate Change

Water (Prevention and Control of Pollution) Act 1974

Central and State Pollution Control Board

Forest (Conservation) Act, 1980

Wild Life (Protection) Act, 1972

## 3.2 ONE STOP SHOP FOR LICENSES

Example Madhya Pradesh:

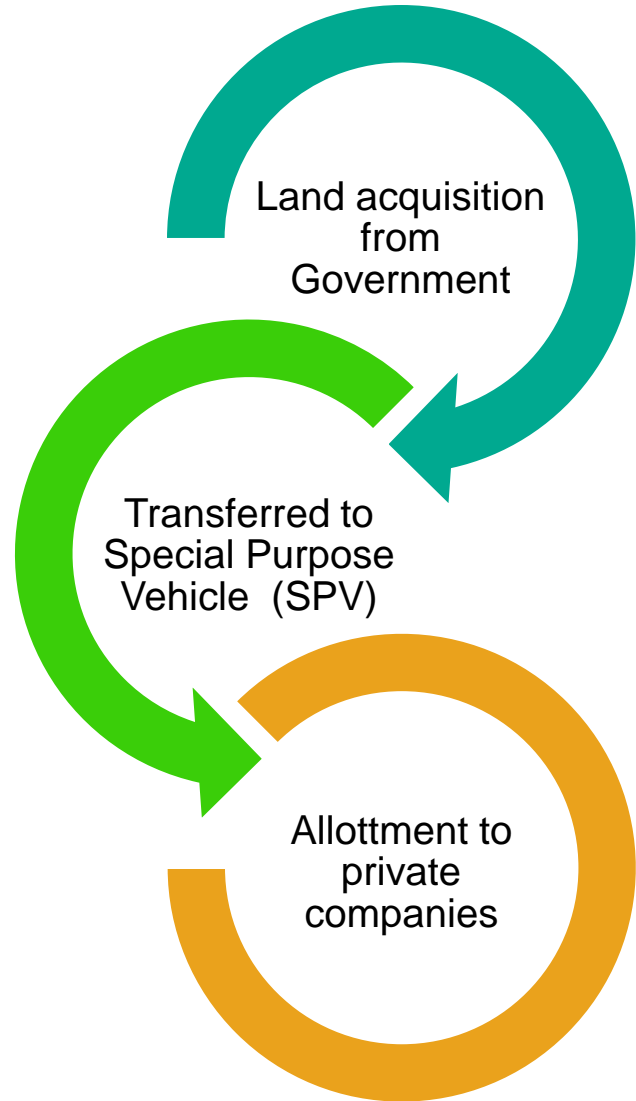


**Exemption:**

Decision of State Nodal Agency's e.g. Madhya Pradesh

- Depends on the policy of each state
- Policy for land allocation in Madhya Pradesh, Rajasthan, Maharashtra and Gujarat
- Allows a single window clearance mechanism

# 3.3 PLUG -AND-PLAY MODEL





## For the Government

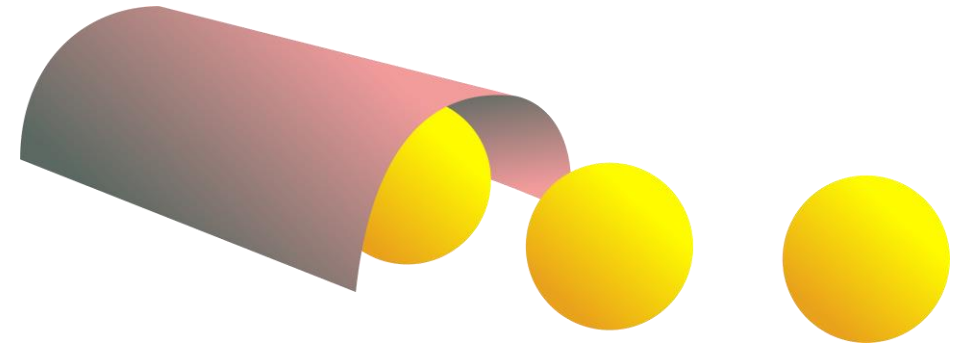
New Electricity Act

Introduction of standard PPA

Expansion of transmission lines

## For Investors

Make in India!





# 5 CONTACT



URSULA HOFFMANN

Senior Consultant  
Rödl & Partner Consulting Pvt. Ltd.

T +91 (0) 20 66 25 71 00

F +91 (0) 20 66 25 71 99

[ursula.hoffman@roedl.com](mailto:ursula.hoffman@roedl.com)